

A premier suburban office building located in the heart of Birmingham's Central Business District.

# 480 Pierce

OFFICE AVAILABILITY | BIRMINGHAM MICHIGAN



**2,004 RSF**  
**PRIME OFFICE**  
**SPACE AVAILABLE**  
**FOR LEASE**

42,619 SF **Suburban Class A Office Building**

Three story, located in downtown Birmingham

**Excellent access** via Woodward Avenue, Maple Road and Southfield Road

**On-site covered parking** available, with access to public parking structure directly across Pierce, as well as metered street parking

480 Pierce is located in the heart of Downtown Birmingham's Central Business District. Designed by Lukenback Ziegelman & Partners and built in 1991, this premier building is located in a leading real estate submarket of Metro Detroit. Historic downtown Birmingham boasts walkable streets, upscale shopping, a variety of dining options, theaters, coffee shops and lush parks.

 **LEASING INQUIRIES**

**REDICO**  
**248 827 1700**  
info@redico.com

# 480 Pierce

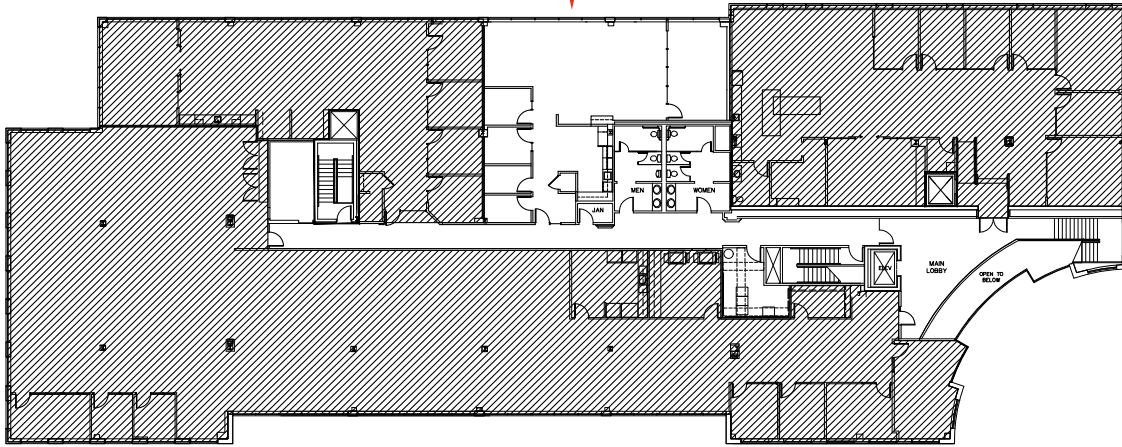
480 PIERCE ROAD | BIRMINGHAM MICHIGAN | 48009



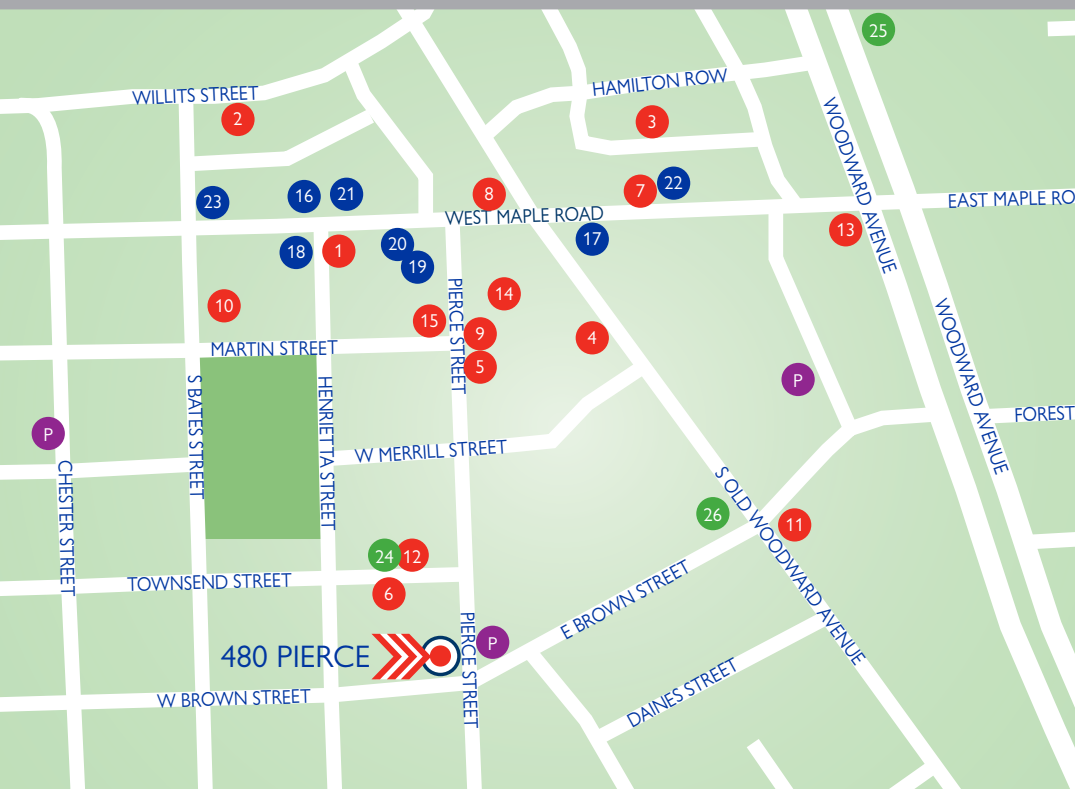
**VOTED #10  
TRAVEL & LEISURE MAGAZINE'S  
COOLEST SUBURBS WORTH  
A VISIT LIST!**

## AVAILABLE

Suite #220  
2,004 RSF



FLOOR 2



480 PIERCE AREA MAP

### DINING

- 1 Brooklyn Pizza
- 2 Sidecar Bistro
- 3 Commonwealth Café
- 4 Leo's Coney Island
- 5 Elie's Mediterranean Grill
- 6 Bella Piatti
- 7 Social Kitchen
- 8 Starbucks Reserve
- 9 Streetside Seafood
- 10 Tallulah Wine Bar & Bistro
- 11 Adachi
- 12 The Rugby Grille
- 13 Hazel's, Coastal Seafood
- 14 Toast
- 15 Townhouse

### SHOPPING

- 16 Anthropologie
- 17 Lululemon Athletica
- 18 West Elm
- 19 Paper Source
- 20 White Birch
- 21 Caruso Caruso
- 22 JoS A. Bank
- 23 Moosejaw Bike and Snow

### HOTELS

- 24 The Townsend Express
- 25 Holiday Inn Express
- 26 Daxton

### PARKING